



Drongan

3 Ailsa Craig View, Drongan, South Ayrshire, KA6 7EL

Offers in excess of £100,000





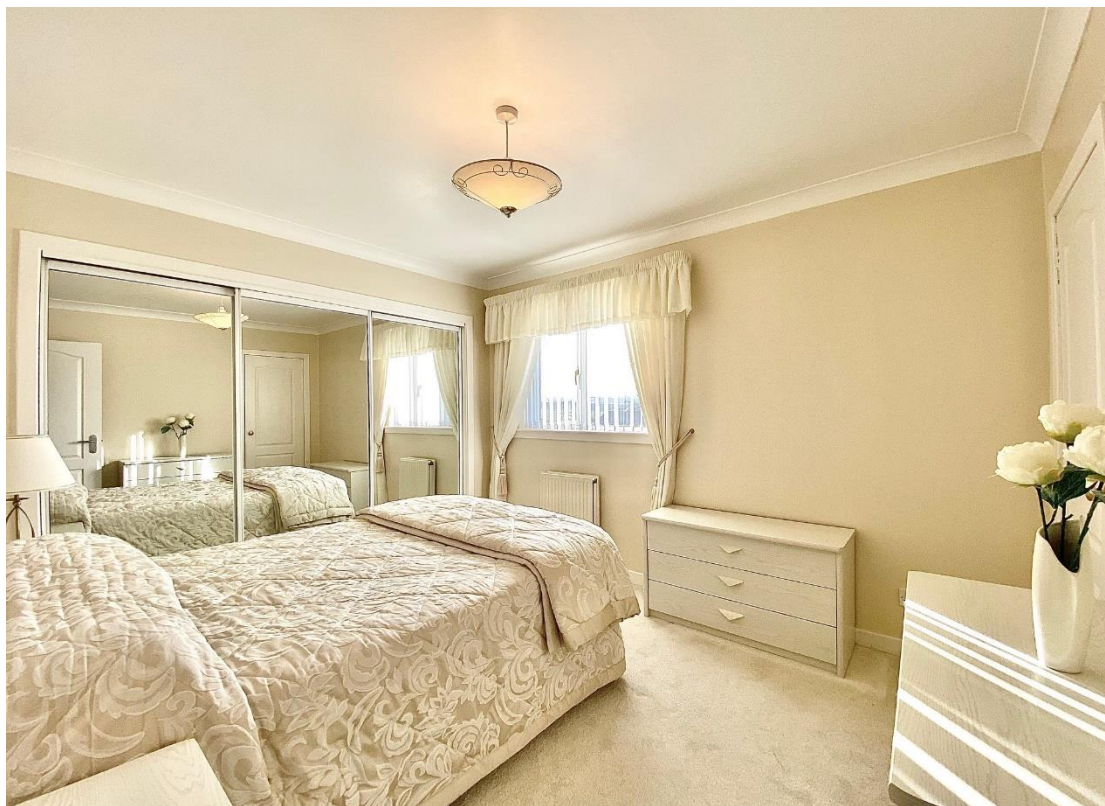
3 Ailsa Craig View, Drongan, South Ayrshire, KA6 7EL

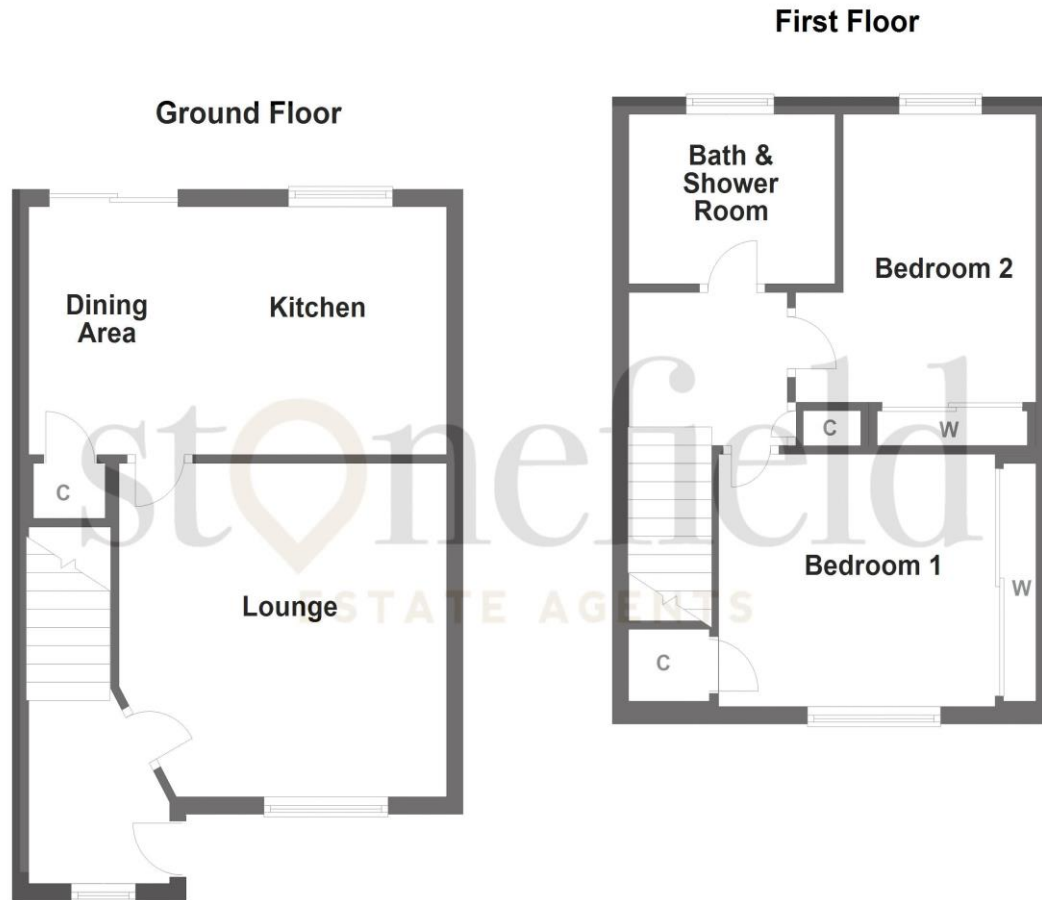
This is a well presented two bedroom semi detached villa, offering generous accommodation over two levels, that is in move-in condition.

On the ground floor there is a wide reception hall, a beautiful lounge with focal point fireplace, a modern fitted kitchen offering plenty of storage, with large open plan dining area looking on to the rear garden, complete with patio doors. On the upper floor there is an airing cupboard and two double sized bedrooms, both benefitting from built-in, double mirrored wardrobes; master bedroom with additional store cupboard. The family bathroom/shower room has a four piece suite; bath and a separate walk-in shower. Access to the loft is via drop down ladder.

This property has a driveway to the side, offering plenty of off-street parking and well maintained front and rear gardens complete with a garden shed for external storage, lawn and a large patio area to enjoy outdoor BBQs or just for relaxing on.

Early viewing is highly recommended.





Plan and measurements are approximate only.
Plan produced using PlanUp.



Dimensions

Rec Hall; 5.8ft x 8.2ft (max) Lounge; 12.8ft x 13.2ft Kitchen/Diner; 16.6ft x 9.5ft Bedroom 1; 11.2ft (excluding wardrobes) x 9.7ft Bedroom 2; 10.7ft (excluding wardrobes) x 9.8ft (max) Bathroom/Shower Room; 8.3ft x 6.5ft



Travel Directions

Upon entering Drongan from Ayr on the B730. Turn right onto Watson Terrace. Turn left onto Pettoch Rd. Turn left onto Ailsa Craig View.

We believe the enclosed information and details to be correct however their accuracy is not guaranteed and they do not form any part of a contract. Photographs are for general information, measurements and distances are approximate and floorplans may not be to scale.

stonefield
ESTATE AGENTS

16a Beresford Terrace
Ayr KA7 2EG

T: 01292 501777

E: enquiries@stonefieldayr.com